

Violoncelle

Danse du sable

Guy Richer

♩ = 100

mf *simile*

10

20

simile

28

37

ff

45

55

mf *mf*

65

f *mf*

73

f

82

mf

Violoncelle
Danse du sable

91

3 mp

98 $\text{♩} = 112$

f

104

110

f

119

126

132

140

148

156

Violoncelle
Danse du sable

164



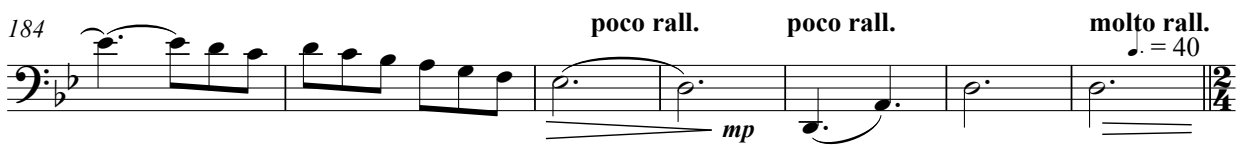
172



178



184



Tempo primo

♩ = 100

191



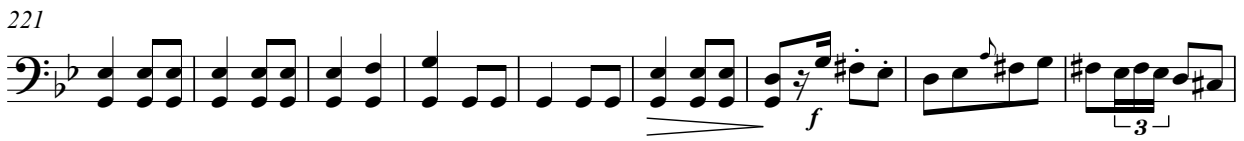
201



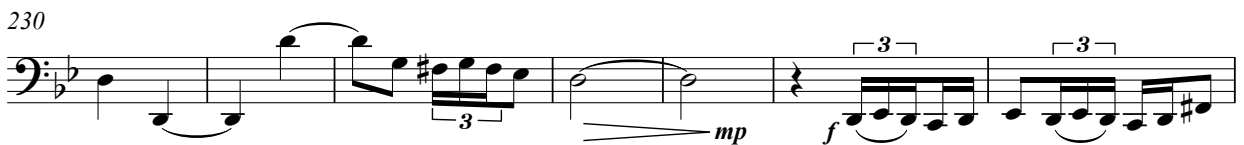
211



221



230



237

